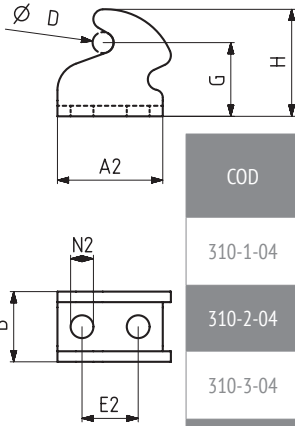


311

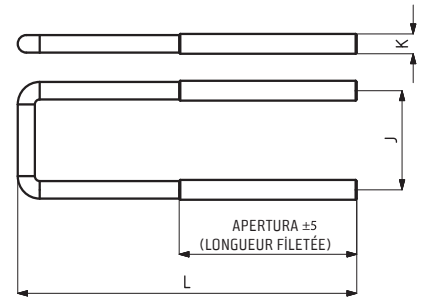


COD	MODELLO NR	INOX	NERO (NOIR)	PESO (POIDS) (gr ±%)	A2	B	D	G	H	E2	N2
310-1-04	311-312-321-331-332-351 - 1	S310 - 1 - 04	B310 - 1 - 04	12	24,5	15,5	Ø 3,5	12,5	19	10	Ø 5
310-2-04	311-312-331-332-351 - 2	S310 - 2 - 04	B310 - 2 - 04	19	28,5	15,5	Ø 3,5	16,5	23	12	5,5 x 7,5
310-3-04	311-312-331-332-351-421 - 3	S310 - 3 - 04	B310 - 3 - 04	36	30	20	Ø 5,5	21	30,5	16	Ø 6,5
310-4-04	311-312-331-332-351 - 4 - 5 371 - 4	S310 - 4 - 04	B310 - 4 - 04	86	45	28	Ø 7	27	39	19,5	8,5 x 10

**Piastra di Aggancio**  
Attaches

311

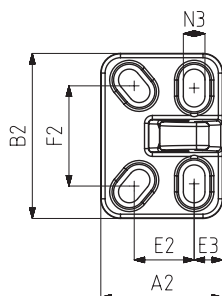
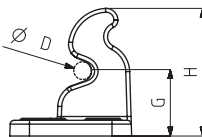
**Gancio a U**  
Crochet U



COD	MODELLO NR	INOX	NERO (NOIR)	PESO (POIDS) (gr ±%)	J	K	L	apertura (Longueur filetée)
<b>150 - 63</b>	*311-312-321-331-332-351 - 1 311-312-331-332-351 - 2*	S 150 - 63	B 150 - 63	14	23	M4	90	45
150 - 591	*311-312-321-331-332-35 1- 1 311-312-331-332-351 - 2*	S 150 - 591	B150 - 591	12	23	M4	75	45
150 - 155	*311-312-321-331-332-351 - 1 311-312-331-332-351 - 2*	S 150 - 155	B 150 - 155	22	23	M4	140	45
<b>150 - 08</b>	311-312-331-332-351 - 3	S 150 - 08	B 150 - 08	39	30	M6	105	75
150 - 156	311-312-331-332-351 - 3	S 150 - 156	B 150 - 156	56	30	M6	155	75
<b>150 - 34</b>	311-312-331-332-351 - 4 - 341 - 3	S 150 - 34	B 150 - 34	101	43	M8	145	95
150 - 198	311-312-331-332-351 - 4	S 150 - 198	B 150 - 198	135	43	M8	195	65
150 - 35	311-312-331-332-351 - 4	S 150 - 35	B 150 - 35	187	43	M8	295	85
150-539	311-312-331-332-351 - 4	-	-	175	43	M8	250	80,5
<b>150 - 148</b>	341 - 4	-	-	222	50	M10	210	130
150-512	341 - 4	-	-	260	50	M10	260	130
<b>150 - 650</b>	371 - 4	-	B150 - 650	85	43	M8	120	65
<b>150 - 141</b>	311-312-331-332-351 - 5	-	B 150 - 141	200	45	M10	180	110
150 - 200	311-312-331-332-351 - 5	-	B 150 - 200	257	45	M10	258	130
150-516	311-312-331-332-351 - 5	-	B 150 - 516	240	45	M10	230	130
150 - 285	341 - 5	-	-	229	54	M12	146	65

**Nuovo**

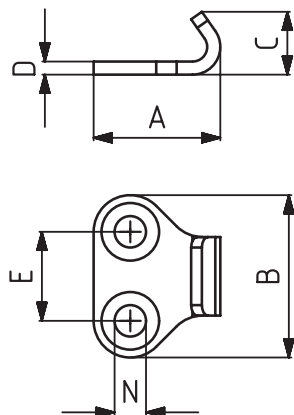
341



COD	MODELLO NR	PESO (POIDS) (gr ±%)	A2	B2	D	G	H	E2	F2	N3
340-3-03	341-3	210	49,5	67	Ø 8	27	52,5	24,5	41	8,5 x 14,5
340-4-03	341-4	400	62	84	Ø 10	33,5	65	30,5	51	11 x 19
340-5-03	341-5	510	66	84	Ø 12	33,5	65	31,5	51	11 x 19

**Piastra di Aggancio**  
Attaches

361

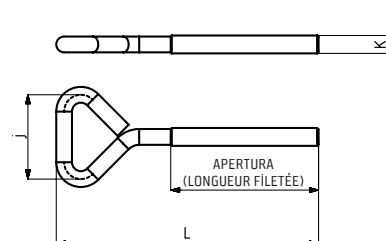


COD	MODELLO NR	INOX	PESO (POIDS) (gr ±%)	A	B	C	D	E	N
361-1-03	361-362-1	S 361 -1 -03	6	19,5	24,5	10	2	14	Ø 5
361-2-03	361-362-2-2-K	S 361 -2 -03	14	24	31	12	2,5	17	Ø 6
361-3-03	361-362-3-3-K	S 361 -3 -03	26	27	40	15	3	22	Ø 6

**Piastra di Aggancio**  
Attaches

361

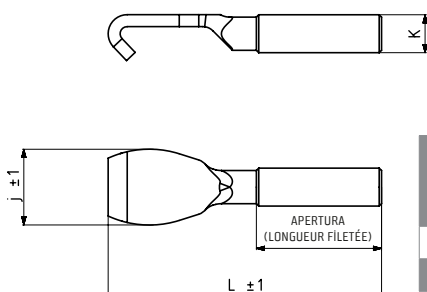
**Gancio**  
Crochet



COD	MODELLO NR	INOX	PESO (POIDS) (gr ±%)	J	K	L	apertura (Longueur filetée)
150 - 697	361 - 1	S 150-697	12	20	M5	50	23
150 - 267	361 - 2 - 361-2-K	S 150-267	24	28	M6	88,5	50
150 - 642	361 - 3 - 361-3-K	S 150-642	56	40	M8	95	40

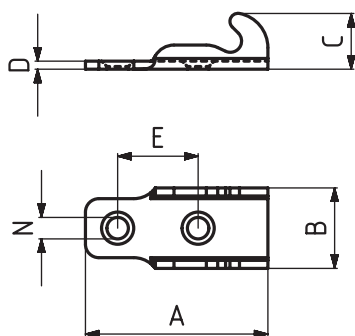
362

**Gancio**  
Crochet



COD	MODELLO NR	INOX	PESO (POIDS) (gr ±%)	J	K	L	apertura (Longueur filetée)
150 - 270	362-1	S 150-270	10	10,5	M6	57	25
150 - 498	362-2	S 150-498	20	14	M8	57,5	25

363

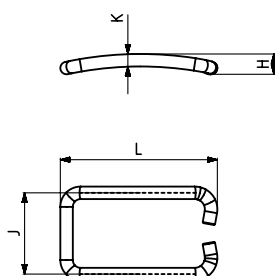


COD	MODELLO NR	INOX	PESO (POIDS) (gr ±%)	A	B	C	D	E	N
363-2-03	363-2	S 363-2-03	6	34	15	10,5	1,5	15	Ø 4

**Piastra di Aggancio**  
Attaches

363

**Nuovo**

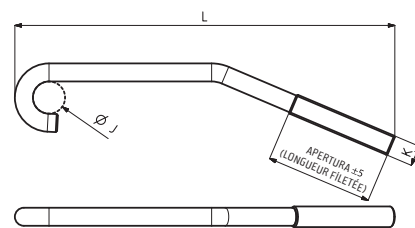


**Gancio**  
Crochet

COD	MODELLO NR	INOX	PESO (POIDS) (gr ±%)	H	J	K	L
150 - 269	363-2	S 150-269	12	6,5	26	Ø4	50

411

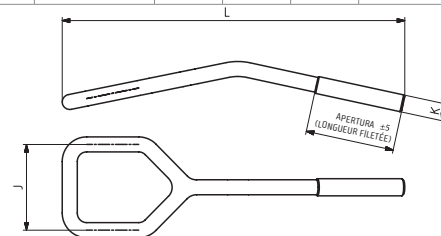
**Gancio a C**  
Crochet C



COD	MODELLO NR	INOX	NERO (NOIR)	PESO (POIDS) (gr ±%)	J	K	L	apertura (Longueur filetée)
150 - 69	411-412 - 2	S 150-69	B 150-69	23	9	M6	122	50
150 - 13	411-412-413 - 3	S 150-13	B 150-13	54	12,5	M8	152	40
150 - 44	411-412 - 4	-	B 150-44	110	16	M10	197	55

421

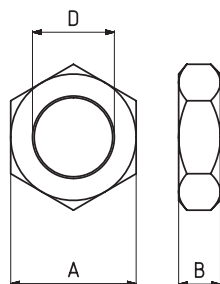
**Gancio a C**  
Crochet C



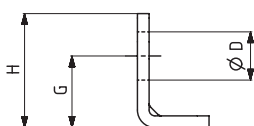
COD	MODELLO NR	INOX	NERO (NOIR)	PESO (POIDS) (gr ±%)	J	K	L	apertura (Longueur filetée)
150-139	421-3	S 150-139	B 150-139	77	40	M8	159	40

510

**Dado**  
Ecrou

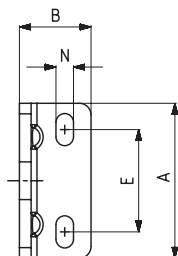


COD	MODELLO NR	INOX	NERO (NOIR)	PESO (POIDS) (gr ±%)	A	B	D
150 - 327	511 - 0	S 511 - ....	B 511 - ....	11	17	6	M10 x 1
150 - 103	511-512-513 - 1	S 511 - ....	B 511 - ....	14	19	7	M12 x 1,5
150 - 74	511-512-513 - 2	S 511 - ....	B 511 - ....	19	24	8	M16 x 1,5
150 - 21	511-512-513 - 3	-	B 511 - ....	29	30	9	M20 x 1,5
150 - 50	511-512-513 - 5 - 6	-	B 511 - ....	62	36	10	M24 x 1,5

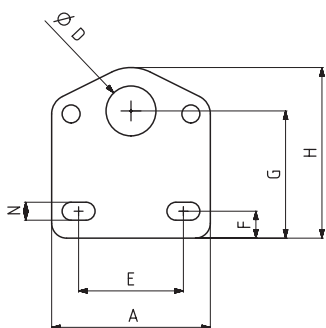
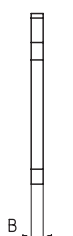


511

**Base Orizzontale**  
Base Horizontale



COD	MODELLO NR	INOX	NERO (NOIR)	PESO (POIDS) (gr ±%)	A	B	Ø D	E	G	H	N
510 - 1 - 01	511 - 1	S 511 - ....	B 511 - ....	36	44	20	12,5	26,5	19,5	30,5	5,5 x 10,5
510 - 2 - 01	511 - 2	S 511 - ....	B 511 - ....	72	53	24,5	16,5	35	24,5	39	6 x 11
510 - 3 - 01	511 - 3	-	B 511 - ....	122	60	30	20,5	38	30,5	48	6,5 x 11
510 - 5 - 01	511 - 5 / 511 - 6	-	B 511 - ....	250	78	36	24,5	49,5	38	61	8,5 x 16



512

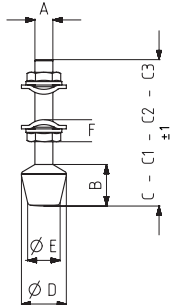
**Base Verticale**  
Base Verticale



COD	MODELLO NR	INOX	NERO (NOIR)	PESO (POIDS) (gr ±%)	A	B	Ø D	E	F	G	H	N
510 - 1 - 02	512 - 1	S 512 - ....	B 512 - ....	40	44	3	12,5	26,5	8,5	35	46	5,5 x 10,5
510 - 2 - 02	512 - 2	S 512 - ....	B 512 - ....	74	53	4	16,5	35	9	42,5	57	6 x 11
510 - 3 - 02	512 - 3	-	B 512 - ....	124	60	5	20,5	38	12,5	52	69	6,5 x 11
510 - 5 - 02	512 - 5 / 512 - 6	-	B 512 - ....	250	78	6	24,5	49,5	15	64,5	87,5	8,5 x 16

911

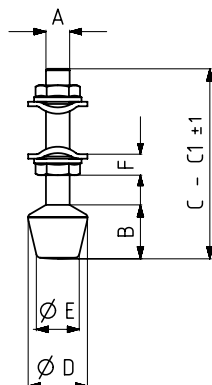
**Puntali in Gomma Siliconica**  
Presseur Silicone



COD	MODELLO NR	INOX	NERO (NOIR)	Zincato nero (Galvanisé noir)	PESO (POIDS) (gr ±%)	Vite DIN 933 (Tige DIN 933)	B	C	C1	C2	C3	D	E	F
150-181	911-0	S 911-....	B 911-....	BG 911-....	7	M 4 x 25	7	31	-	-	-	10	8	6
150-547	911-0-C1	S 911-....	B 911-....	-	8	M 4 x 60	7	-	65,5	-	-	10	8	6
150-99	911-1	S 911-....	B 911-....	BG 911-....	12	M 5 x 35	10,5	43,5	-	-	-	12,5	9	7
150-545	911-1-C1	S 911-....	B 911-....	-	14	M 5 x 60	10,5	-	68,5	-	-	12,5	9	7
150-86	911-2	S 911-....	B 911-....	BG 911-....	23	M 6 x 40	14,5	50,5	-	-	-	16	10,5	8
150-245	911-2-C1	S 911-....	B 911-....	-	34	M 6 x 100	14,5	-	110,5	-	-	16	10,5	8
150-246	911-2-C2	S 911-....	B 911-....	-	41	M 6 x 120	14,5	-	-	130,5	-	16	10,5	8
150-546	911-2-C3	S 911-....	B 911-....	-	28	M 6 x 60	14,5	-	-	-	70,5	16	10,5	8
150-87	911-3	S 911-....	B 911-....	BG 911-....	46	M 8 x 50	18	63,5	-	-	-	20	14	10
150-247	911-3-C1	S 911-....	B 911-....	-	55	M 8 x 70	18	-	83,5	-	-	20	14	10
150-283	911-3-C2	S 911-....	B 911-....	-	75	M 8 x 130	18	-	-	143	-	20	14	10
150-641	911-3-C3	S 911-....	B 911-....	-	22	M 8 x 35	18	-	-	-	48,5	20	14	10
150-88	911-4	-	B 911-....	BG 911-....	97	M 10 x 70	23,5	87	-	-	-	26,5	17	13
150-217	911-4-C1	-	B 911-....	-	116	M 10 x 110	23,5	-	125	-	-	26,5	17	13
150-116	911-5	-	B 911-....	BG 911-....	156	M 12 x 80	27,25	100	-	-	-	30	21	15
150-354	911-5-C1	-	B 911-....	-	174	M 12 x 110	27,25	-	130	-	-	30	21	15

BG911 NR

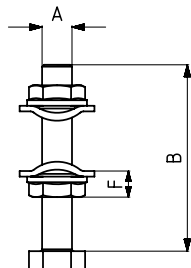
**Puntali in Gomma Naturale**  
Presseur Caoutchouc



COD	MODELLO NR	PESO (POIDS) (gr ±%)	Vite DIN 933 (Tige DIN 933)	B	C	D	E	F
BG150-181-NR	BG911-0-NR	7	M 4 x 25	7	31	10	8	6
BG150-99-NR	BG911-1-NR	12	M 5 x 35	10,5	43,5	12,5	9	7
BG150-86-NR	BG911-2-NR	23	M 6 x 40	14,5	50,5	16	10,5	8
BG150-546-NR	BG911-2-C3-NR	28	M 6 x 60	14,5	70,5	16	10,5	8
BG150-87-NR	BG911-3-NR	46	M 8 x 50	18	63,5	20	14	10
BG150-88-NR	BG911-4-NR	97	M 10 x 70	23,5	87	26,5	17	13
BG150-116-NR	BG911-5-NR	156	M 12 x 80	27,25	100	30	21	15

M911

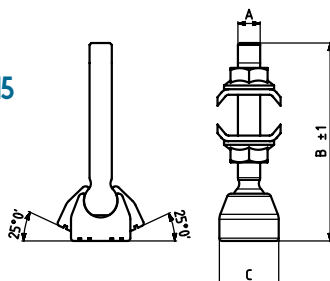
**Puntali Metallici**  
Presseur Métallique



COD	MODELLO NR	INOX	NERO (NOIR)	PESO (POIDS) (gr ±%)	A Vite DIN 933 (SCREW DIN 933)	B	F
150-181-324-00	M911-0	S M911-....	B M911-....	7	M 4 X 25	25	6
150-99-263-00	M911-1	S M911-....	B M911-....	12	M 5 X 35	35	7
150-86-264-00	M911-2	S M911-....	B M911-....	23	M 6 X 40	40	8
150-87-265-00	M911-3	S M911-....	B M911-....	42	M 8 X 50	50	10
150-88-266-00	M911-4	-	B M911-....	89	M 10 X 70	70	13
150-116-328-00	M911-5	-	B M911-....	145	M 12 X 80	80	15

912

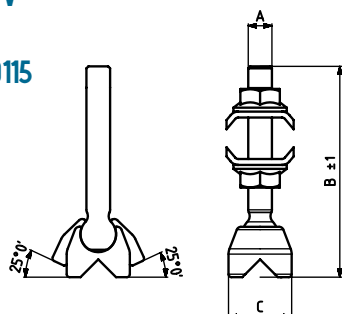
**Puntali Metallici Orientabili**  
Presseur Métallique Orientable  
**BREVETTO NR(BREVETE N°): 20100115**



MODELLO NR	ANGOLO (ANGLE)	PESO (POIDS) (gr ±%)	A	B	C
912-2	25°	36	M6	53,5	Ø15
912-3	25°	70	M8	63,5	Ø20
912-4	25°	149	M10	90	Ø26
912-5	25°	223	M12	103	Ø30

913

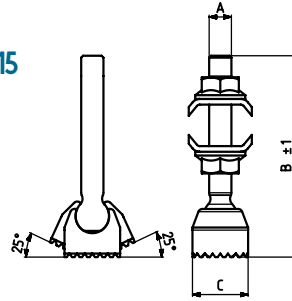
**Vite di Regolazione, Base Taglio a V**  
Presseur Métallique En V  
**BREVETTO NR(BREVETE N°): 20100115**



MODELLO NR	ANGOLO (ANGLE)	PESO (POIDS) (gr ±%)	A	B	C
913-2	25°	32	M6	53,5	Ø15
913-3	25°	66	M8	63,5	Ø20
913-4	25°	142	M10	90	Ø26
913-5	25°	212	M12	103	Ø30

914

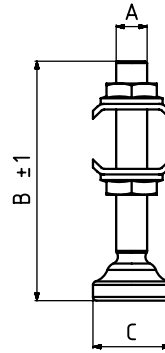
**Vite di Regolazione, Base Zigrinata**  
Presseur Métallique Orientable  
**BREVETTO NR(BREVETE N°): 20100115**



MODELLO NR	ANGOLO (ANGLE)	PESO (POIDS) (gr ±%)	A	B	C
914 - 2	25°	33	M6	53,5	Ø15
914 - 3	25°	69	M8	63,5	Ø20
914 - 4	25°	148	M10	90	Ø26
914 - 5	25°	222	M12	103	Ø30

915

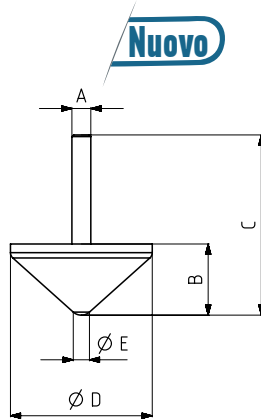
**Puntali Metallici** BREVETTO NR(BREVETE N°)  
Presseur Métallique Fixe 20100115



MODELLO NR	PESO (POIDS) (gr ±%)	A	B	C
915 - 1	8	M5	43	Ø14
915 - 2	15	M6	53,5	Ø16
915 - 3	53	M8	64,5	Ø20
915 - 4	105	M10	86	Ø25
915 - 5	182	M12	98	Ø30

150-623

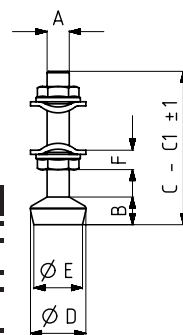
**Puntali in NBR**  
Presseur NBR



COD	MODELLO NR	INOX	PESO (POIDS) (gr ±%)	Vite DIN 933 (Tige DIN 933)	B	C	D	E
150 - 623	510-520-530-550-620-640-660-670-3	S150 - 623	155	M8 x 50	30	76	60	6,5

916

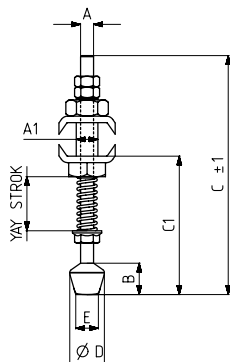
**Puntali in Gomma Siliconica**  
Presseur Silicone



COD	MODELLO NR	INOX	NERO (NOIR)	PESO (POIDS) (gr ±%)	Vite DIN 933 (Tige DIN 933)	B	C	C1	D	E	F
150 - 324	916 - 0	S 916 - ....	B 916 - ....	6	M4 x 25	5	29	-	10	9	6
150 - 526	916 - 0 - C1	S 916 - ....	B 916 - ....	10	M4 x 60	5		63,9	10	9	6
150 - 263	916 - 1	S 916 - ....	B 916 - ....	16	M 5 x 35	7	40	-	12	10	7
150 - 588	916 - 1 - C1	S 916 - ....	B 916 - ....	16	M 5 x 60	7		65	12	10	7
150 - 264	916 - 2	S 916 - ....	B 916 - ....	23	M 6 x 40	10	46	-	16	13	8
150 - 265	916 - 3	S 916 - ....	B 916 - ....	46	M 8 x 50	12	57	-	20	16	10
150 - 266	916 - 4	-	B 916 - ....	98	M10 x 70	16	79	-	26	20	13
150 - 328	916 - 5	-	B 916 - ....	152	M12 x 80	19	91	-	30	24	15

917

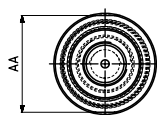
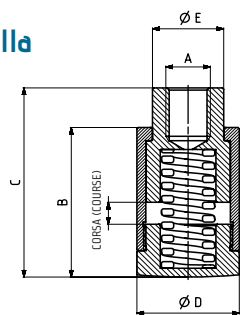
**Puntali in Silicone Con Molla**  
Presseur Silicone à Ressort



COD	MODELLO NR	NERO (NOIR)	CORSA DELLA MOLLA	PESO (POIDS) (gr ±%)	Vite DIN 933 (Tige DIN 933)	A1	B	C	C1	D	E
150 - 545	917 - 3	B 917 - ....	8	37	M 5 x 60	M8	10,5	68,5	35,5	12,5	9
150 - 246	917 - 4	B 917 - ....	14	82	M 6 x 120	M10	14,5	130,5	55 - 93,5	16	10,5
150 - 283	917 - 5	B 917 - ....	19	140	M 8 x 130	M12	18	143	69-88	20	14

918

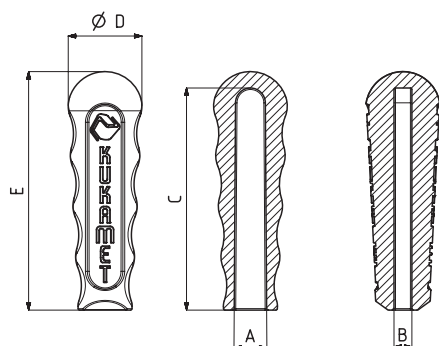
**Puntali Metallici Con Molla**  
Presseur Métallique  
à Ressort



MODELLO NR	F1 (N)	CORSA (COURSE)	PESO (POIDS) (gr ±%2)	A	AA	B	C MIN.	C MAX.	ØD	ØE
918 - 3	200	5	96	M8	22	34	38	43	23	16
918 - 4	250	5	93	M10	22	34	38	43	23	16
918 - 5	300	5	91	M12	22	34	38	43	23	16

921

**Manopola in Plastica**  
Poignée Polyuréthane

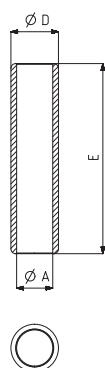


MODELLO NR	NERO (NOIR)	PESO (POIDS) (gr ±%2)	A	B	C	D	E
921 - 0	B 921 - ....	1	6,5	3	26,5	10,5	29
921 - 1	B 921 - ....	8	11	4	54	17,5	58
921 - 2	B 921 - ....	15	11	5	54	23	60
921 - 3	B 921 - ....	27	11	6	74	25	80
921 - 4	B 921 - ....	49	18	6	94	29	100
921 - 4	B 921 - ....	49	18	8	94	29	100
921 - 4	B 921 - ....	49	18	10	94	29	100



921-M

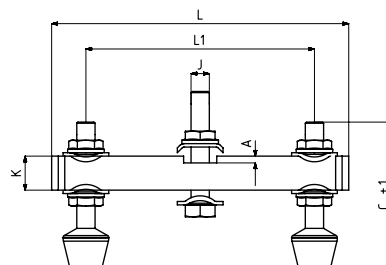
**Impugnatura Metallica**  
Poignée Métallique



COD	MODELLO NR	PESO (POIDS) (gr ±%2)	A	D	E
921-1-2-M	110-210-310-330-410-510-710-810 - 1 - 2	44	12	16	60
921-1-2-M-C1	222-232-820 - 2	54	12	16	110
921-3-M	110-210-310-330-410-510-710-810 - 3	57	12	18	80
921-3-M-C1	110-210-310-330-410-510-710-810 - 3	90	12	18	130
921-4-M	110-210-310-330-410-4 / 110-210-310-5	164	19	25	100
921-4-M-C1	110-210-310-330-410-4 / 110-210-310-5	241	19	25	150

931

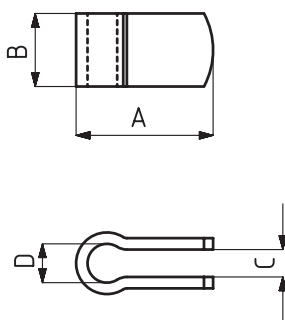
**Staffa a Doppio Puntale**  
Presseur à Double Points



MODELLO NR	NERO (NOIR)	PESO (POIDS) (gr ±%2)	A	C	L	L1	J	K
931 - 1	B 931 - ....	60	2,5	43,5	90	30 - 70	M5	10
931 - 2	B 931 - ....	142	2,5	50,5	110	30 - 80	M6	16
931 - 3	B 931 - ....	289	3	63,5	130	40 - 100	M8	20
931 - 4	B 931 - ....	463	4	87	160	50 - 120	M10	20
931 - 5	B 931 - ....	774	5	100	180	60 - 140	M12	25

941-G

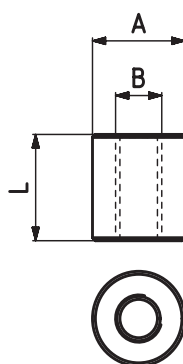
**Porta Bussola**  
Porte Tige



MODELLO NR	NERO (NOIR)	Puntali in gomma silconica (Presseur silicone)	PESO (POIDS) (gr ±%)	A	B	C	D
941 - 1 - G	B 941 - ....	M5	6	25	10	5	Ø 6,5
941 - 2 - G	B 941 - ....	M6	10	25	13	5	Ø 6,5
941 - 2 - C1 - G	B 941 - ....	M6	16	35	13	6,5	Ø 6,5
941 - 3 - G	B 941 - ....	M8	20	30	16	6	Ø 8,5
941 - 4 - G	B 941 - ....	M10	35	37	20	8	Ø 10,5
941 - 5 - G	B 941 - ....	M12	61	40	25	10	Ø 12,5

951-G

**Bussola Filettata**  
Douille Filetée

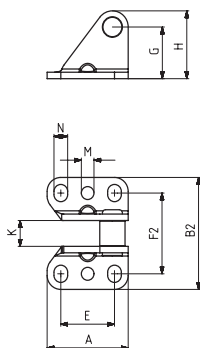


MODELLO NR	NERO (NOIR)	PESO (POIDS) (gr ±%)	A	B	L
951 - 1 - G	B 951 - ....	6	Ø 10	M5	12
951 - 2 - G	B 951 - ....	10	Ø 12	M6	15
951 - 3 - G	B 951 - ....	23	Ø 16	M8	18
951 - 4 - G	B 951 - ....	32	Ø 18	M10	22
951 - 5 - G	B 951 - ....	44	Ø 20	M12	27
951 - 6 - G	B 951 - ....	94	Ø 25	M12	32



961

**Piastra di Aggancio**  
Attaches

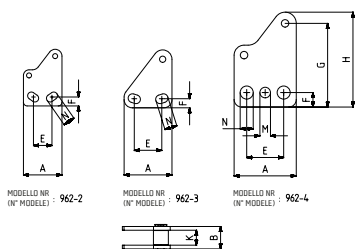


COD	MODELLO NR	INOX	NERO (NOIR)	PESO (POIDS) (gr ±%)	A	E	G	H	K	M	N	F2	B2
961 - 2	411 - 2	S 961 - ....	B 961 - ....	50	31	15	26	31,5	10	-	6 x 9,5	32,5	47
961 - 3	411 - 3	S 961 - ....	B 961 - ....	65	38,5	22	24	31,5	12	-	7 x 10	37,5	52
961 - 4	411 - 4	-	B 961 - ....	210	50	30	40	49	16	8,5	10,5 x 15	60,5	84



962

**Piastra di Aggancio**  
Attaches

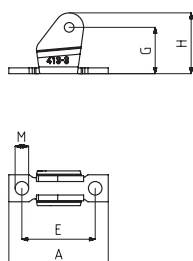


COD	MODELLO NR	INOX	NERO (NOIR)	PESO (POIDS) (gr ±%)	A	B	E	F	G	H	K	M	N
962 - 2	412 - 2	S 962 - ....	B 962 - ....	51	31	15	15	7	40	45,5	10	-	6 x 9,5
962 - 3	412 - 3	S 962 - ....	B 962 - ....	65	38,5	18	22	7,3	39	46,5	12	-	7 x 10
962 - 4	412 - 4	-	B 962 - ....	220	50	24	30	11,5	67	76	16	8,5	Ø10,5



963

**Piastra di Aggancio**  
Attaches



COD	MODELLO NR	INOX	NERO (NOIR)	PESO (POIDS) (gr ±%)	A	E	M	G	H
963-3	413-3	S 963 - ....	B 963 - ....	46	51,5	38	7	24	31,5